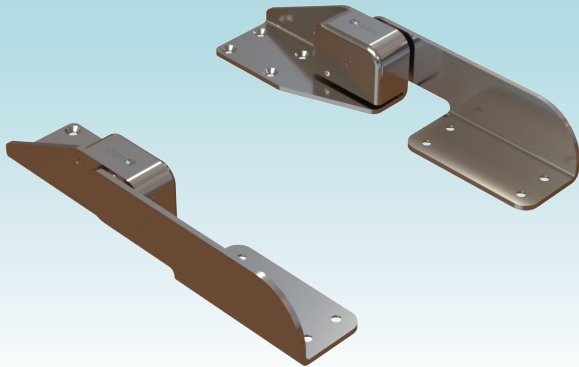




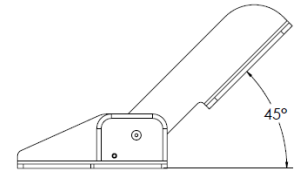
COMMAND RATCHET HINGE, 13-1/16"



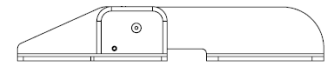
This heavy-duty, unique Command Ratchet Hinge is designed specifically for footrests, headrests, and steps to securely lock in place at 0°. When not in use, the hinge can easily be stowed by pulling the hinge up to 45° to release the ratcheting mechanism to its -74° resting position. The modular design of this Command Ratchet Hinge also allows custom applications, different stops and reset angles, depending on the use.

FEATURES & BENEFITS

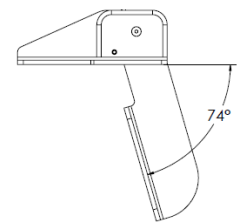
- Ideal for footrests, headrests, and steps
- Easily adaptable to many applications
- Compatible for cushions up to 4" thick
- One locking position at 0.0°
- Polished Type-304 stainless steel
- Countersunk for #10 fastener or 1/4-20 bolt



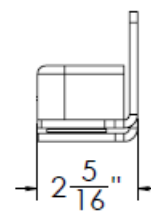
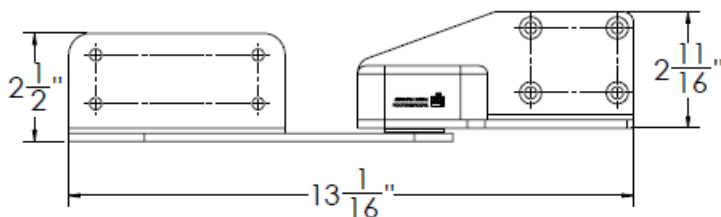
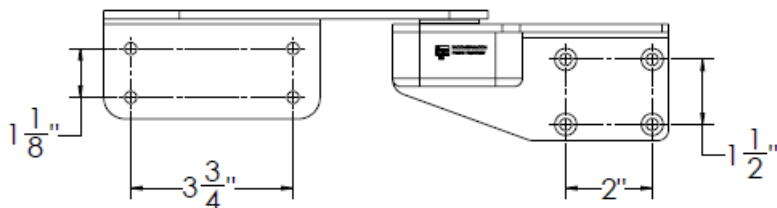
RELEASE POSITION (45 DEGREES)



LOCKING POSITION (0 DEGREES)



RESET POSITION (-74 DEGREES)



PART NUMBER	DESCRIPTION	UOM
H25-1001	Ratchet Hinge 0° Locking HD Pair HD	Pair