

TACO Marine® Grand Slam Mounts

GS-860 & 960 Mount

INSTALLATION INSTRUCTION GUIDE



WARNING:

This product can expose you to chemicals including Lead, which is known to the State of California to cause cancer, birth defects or other reproductive harm. For more information go to www.P65Warnings.ca.gov.

TACO
MARINE

Kit Contents

1

Grand Slam 860 mount
(for both the GS-860 and GS-960)

1

Drill template

1

Tube, light and 6" lead for 12-volt DC
power supply for light function (GS-960
and GS-960-P only)

1

Comes with a 12" wire lead and water-sea-
led Deutsch connector, using 18-gauge
wire from the base

GS

Required*

*not included

- SAFETY GLASSES
- DRILL & SCREW GUN • CRIMP TOOL FOR DT CONNECTOR
- MASKING TAPE & PENCIL
- 1/4" DRILL BIT
- THREE 1/4-20 FLAT HEAD SCREWS
(LENGTH= (THICKNESS OF TOP) + 7/8")
- THREE 1/4-20 LOCKING NUTS
- MARINE-GRADE SEALANT
- MARINE-GRADE GREASE / ANTI-SEIZE OR
TEFLON TAPE
- 10A FUSE (PROVIDED)GS-960 ONLY
- FLATHEAD SCREWDRIVER
- 18-GAUGE WIRE FOR GS-860 & GS-960
- ON-OFF-ON DPDT
SWITCH UP/DOWN OPERATION 860 & GS-960
- THREE-POSITION LIGHT SWITCH ON-OFF-ON
- FOR THE GS-950 ONLY - 3A FUSE FOR LIGHT*

TACO[®]

Handy Tips

- Always use good quality stainless steel hardware when mounting the base.
- Please do not attempt to weld the base to anything.
- It is also important that your Canvas T-Top, Arch or Hardtop, be suitably constructed to provide a strong mounting surface area.

-860/960

Thank you for purchasing the Grand Slam 860 VHF Antenna Mount or Grand Slam 960 Masthead Anchor Light by TACO Marine. Since 1959, we have taken great pride in offering the highest-quality products with excellent customer service. We stand behind our products 100 percent. Please visit our website tacomarine.com for more detailed information on a wide variety of products and to register your new accessory for warranty.

GS-860 MOUNT INSTALLATION FOR ANTENNA

1. Use the drill template to mark and drill with a 1/4" bit the three bolt holes and the one 3/4" hole for the wiring connector.
2. If your top requires spacers, trim the included vinyl spacers to the depth of your hardtop thickness. Insert the vinyl spacers into each bolt hole.
3. Place a bead of marine-grade sealant on the underside of the rubber mounting pad. This helps prevent water intrusion.
4. Securely bolt the base to the mounting surface. Be careful not to deform the top.
5. Connect wire according to the figures on pages 7 and 8.
6. Use a 10A fuse in the main +12 VDC power feed.
7. Ensure the Black wire has a good connection to battery ground.
8. Operate the unit in both directions using the switch.
9. Connect wire antenna according to manufacturer's instructions.

-
- The three (3) vinyl spacers will help prevent any hardtop compression. When installing through a hardtop, make sure the top is foam or core filled. It is recommended to use included spacers to fit inside where the mounting bolts pass through to ensure that when the bolts are tightened the top is not compressed.
 - Position the mount with the antenna or light attached so that it will not interfere with other hardware on the top.
 - Route electrical cables to boat's control panel and attach wires per manufacturer's recommendations.
 - Before installing VHF Antenna or LED Light Tube, apply a thin layer of marine grease, anti-seize or teflon tape to the threaded shaft.

GS-960 MOUNT INSTALLATION FOR MASTHEAD ANCHOR LIGHT

1. Use the drill template to mark and drill with a 1/4" bit the three bolt holes and the one 3/4" hole for the wiring connector.
2. If your top requires spacers, trim the included vinyl spacers to the depth of your hardtop thickness. Insert the vinyl spacers into each bolt hole.
3. Place a bead of marine-grade sealant on the underside of the rubber mounting pad. This helps prevent water intrusion.
4. Securely bolt the base to the mounting surface. Be careful not to deform the top.
5. Connect wire according to Figures on page 7 and 8.
6. Use a 10A fuse in the main +12 VDC power feed (not included).
7. Use a 3A fuse for the light (not included).
8. Ensure the Black wire has a good connection to battery ground.
9. Operate the unit in both directions using the switch (not included).
10. Screw down the bottom of the light tube assembly to the mount.

NOTE: Before installing the LED Light Tube, apply a thin layer of marine grease, anti-seize or teflon tape to the threaded shaft.

LIGHT

The light assembly is composed of two parts – one (1) Lamp Assembly and one (1) Stanchion.

1. Thread the LED light tube to the GS-860 mounting base.
Note: Apply a thin layer of marine-grade grease or anti-seize to the threads before installing.
2. Noting the sticker that reads "TO BOW" on the light, position the light properly.
3. Attach your 18-Gauge, 3-wire cable coming from the helm to the 18-Gauge, 3-wire lead out of the GS-960 stanchion/tube assembly refer to figures on page 8.
4. Connect your chosen switch (not included) per manufacturer's recommendations.
5. Mount the switch to your chosen location at the helm.

EMERGENCY RELEASE OPERATION

The GS-860 and GS-960 feature a Quick Release Knob for emergency operation. Simply turn the knob counterclockwise to adjust the Antenna or Masthead Anchor Light. Once repositioning is complete, turn the knob clockwise to tighten. Repeat this process whenever manual override is necessary. Note: do not completely unscrew the Quick Release Knob, as the nut may fall out. Loosen the Knob just enough to reposition the Antenna or Masthead Anchor Light, then tighten accordingly.



NOTE:

For instructions and to replace the Grand Slam 960 Masthead Anchor Light, purchase a replacement [F38-9000BLY] at tacomarine.com.

How to use

When boating with the Grand Slam 860 or Grand Slam 960, easily adjust the top-mounted VHF Antennas or Masthead Anchor Light with the simple push of a button. Once either accessory is mounted to the top and wired into the control panel, lift or descend the accessories by pressing the up or down buttons. When either accessory has reached its full upright or down position, the motor will stop automatically.

Wiring Schematic for the following Products:

- GS-860 (Black Controller EC-860-7A)
- GS-960 (Black Controller EC-860-7A)
- GS-960-P (Black Controller EC-860-7A)

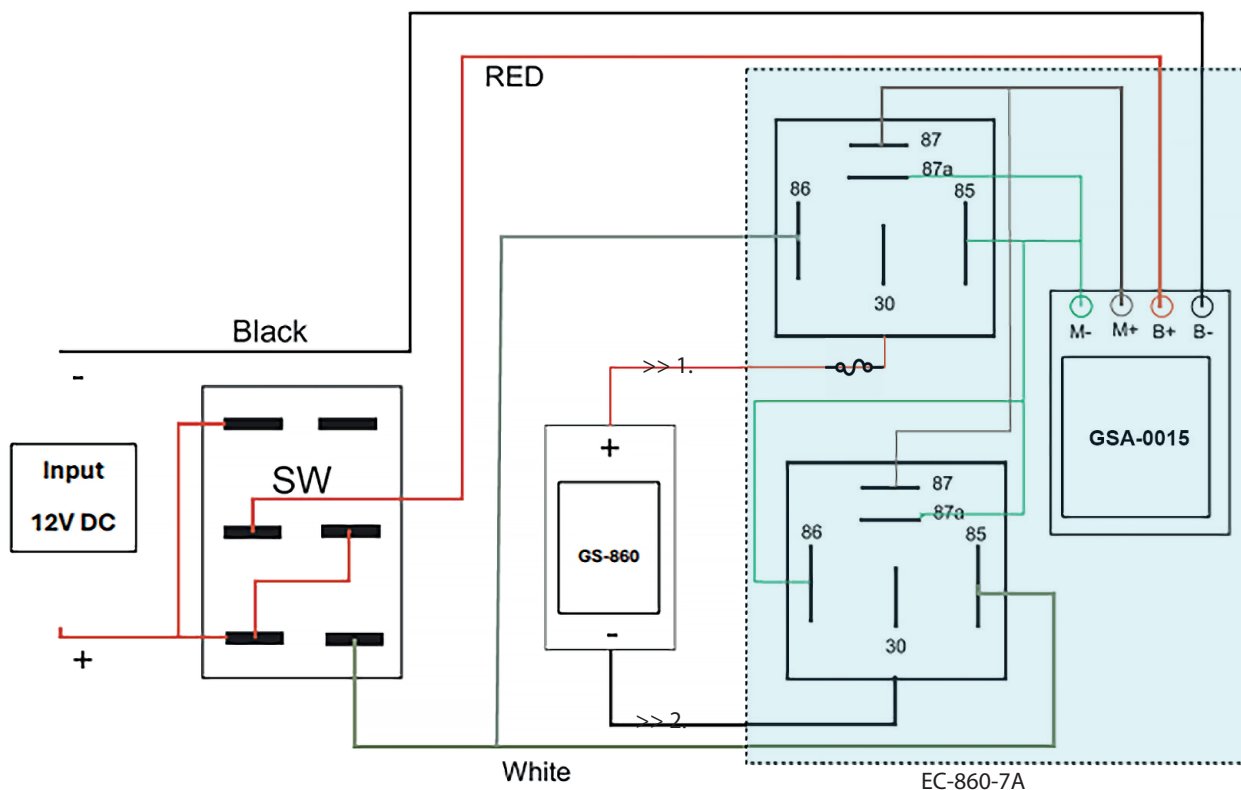
SW, Switch Type: **ON-OFF-ON**
(Not Included)

Fuse: **EC-860-7A (10 amp fuse)**

Connector: **Deutsch DT-06-2S and DT-04-2P (Included)**



Fig. 7



>> 1.
>> 2. = Deutsch Connector

The compliance date for ABYC A-16, Installation of Electric Navigation Lights, and C-5, Construction and Testing of Electric Navigation Lights, went into effect on August 1, 2023. All TACO Marine Navigation, Masthead, and All-Around Lights meet the requirements set forth and are approved under the NMMA Type Accepted Agreement. Additionally, all TACO Marine Navigation Lights have always used LED Cree chip technology. Please see below for documented approval of the required testing:

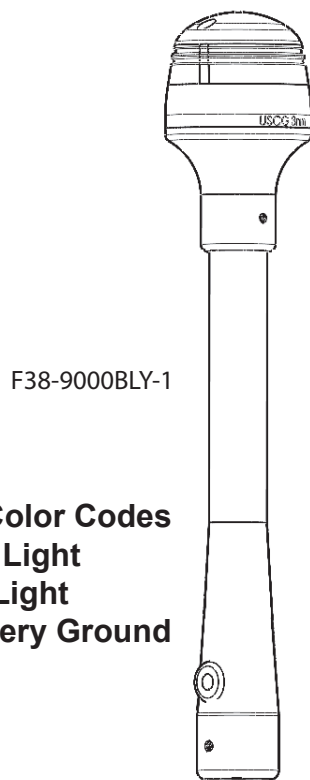
- C-5 Testing
 - All-Around (F38-9000 Root Part Number)
 - Component ID 2619819
-
- C-5 Compliant
 - Navigation Lights (Side Lights)
 - Component ID 2619788

WIRING DIAGRAMS

MASTHEAD ANCHOR LIGHT

Fig. 8

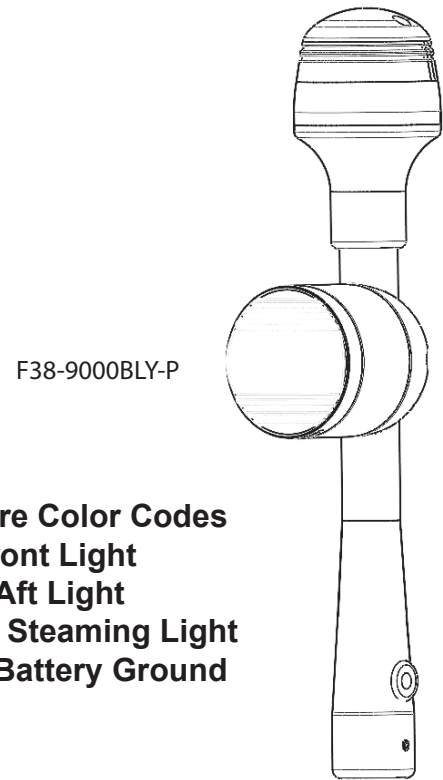
GS-960



Wire Color Codes

- Red - Front Light
- White - Aft Light
- Black - Battery Ground

GS-960-P

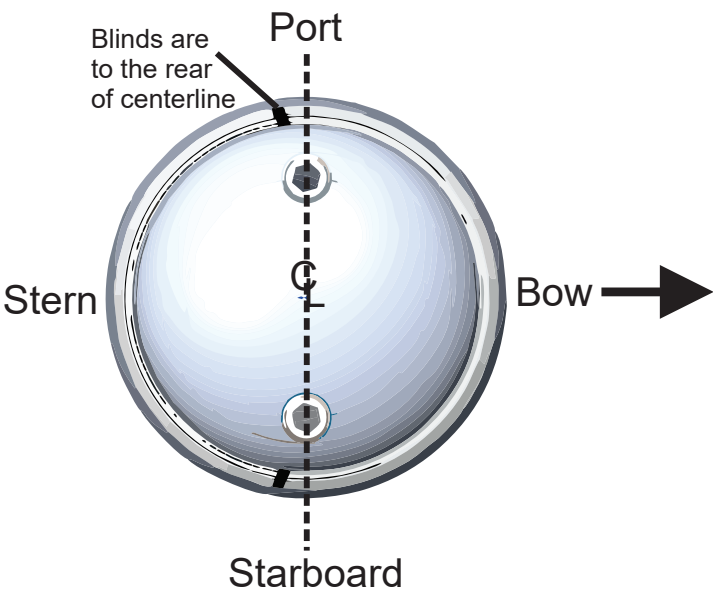


Wire Color Codes

- Red - Front Light
- White - Aft Light
- Brown - Steaming Light
- Black - Battery Ground

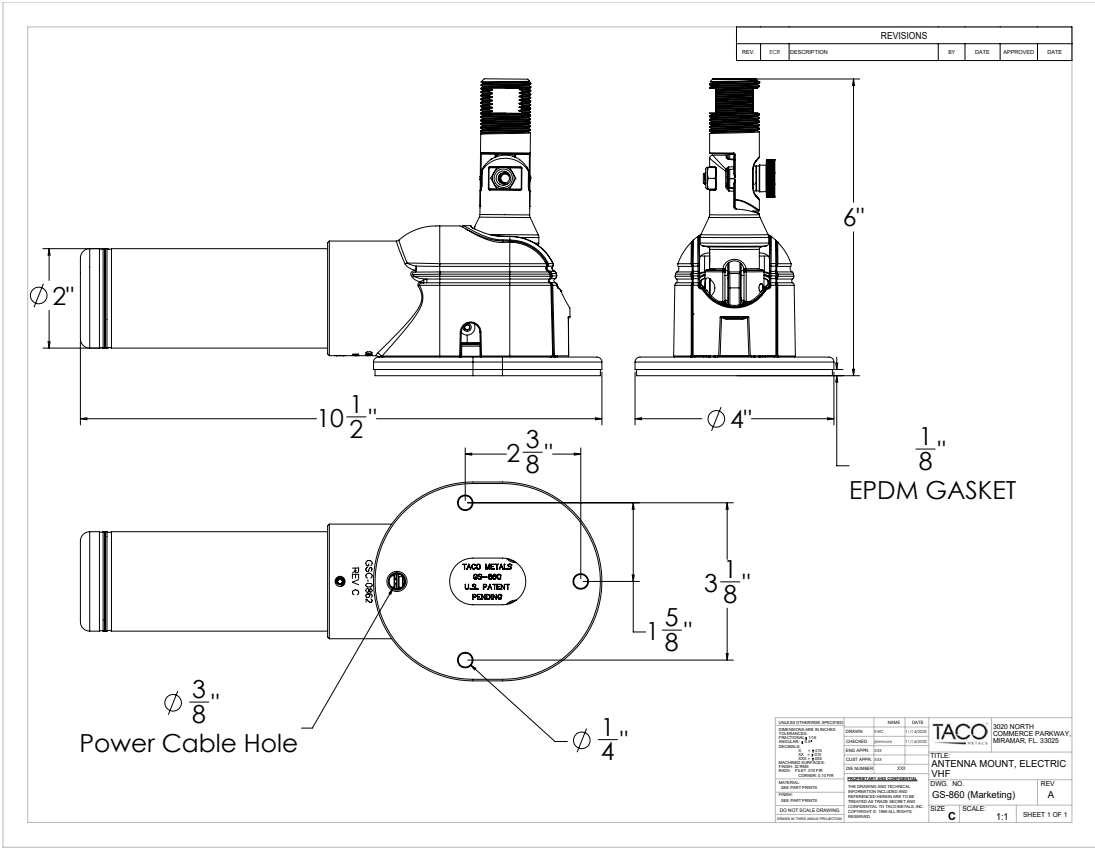


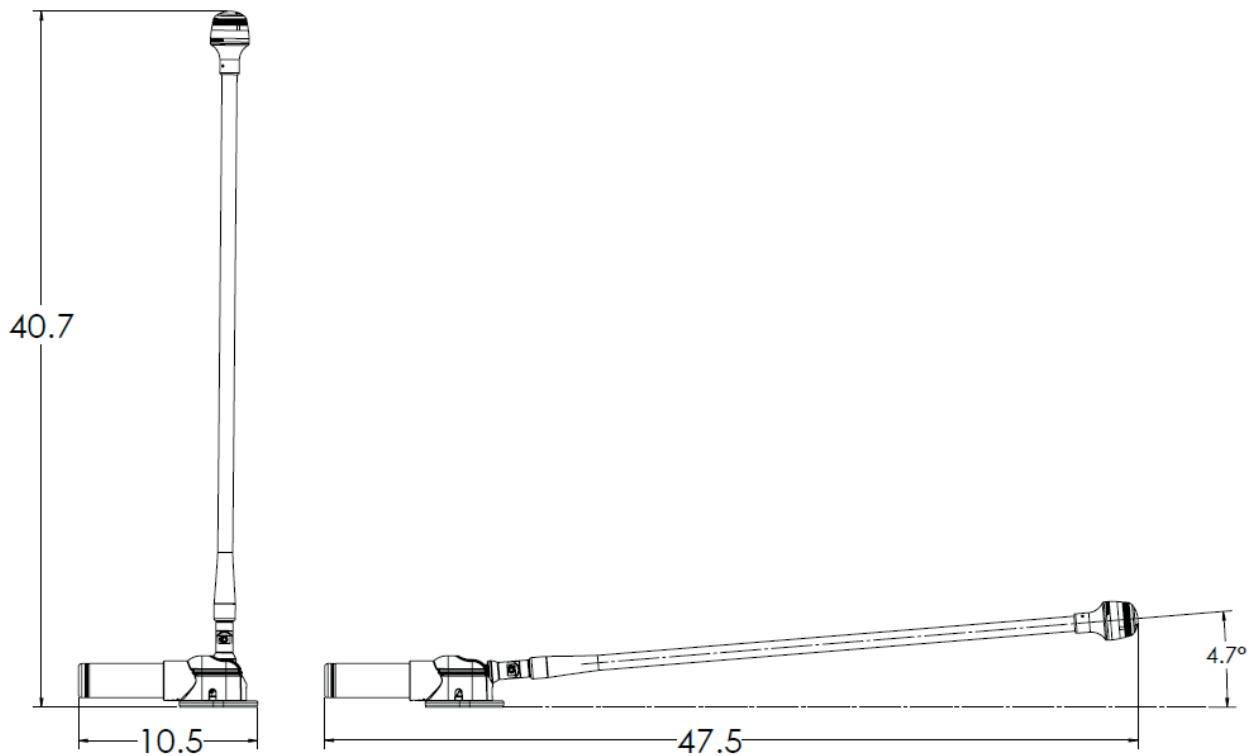
ANCHOR LIGHT ALIGNMENT



PRODUCT DIMENSIONS

GS-860





UP POSITION

DOWN POSITION

DEUTSCH TERMINAL CRIMP TOOL



Size:
14-18 AWG
Length:
165mm / 6.5inch
Weight:
0.268kg / 0.59lb

- For use with 14, 16, 18 gage closed barrel terminals
- Applicable to solid contacts for Deutsch DTP and DTHD and Amphenol AT Series

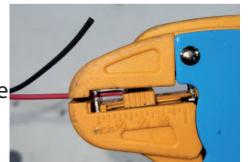
Use automatic wire stripper to remove the wire insulated coating from the 2 wires (1 red, 1 black). Do the same for the opposite end.

Note: Ensure the wire stripper is still set to 5/16 inches before use. This will leave the 2 wires (1 red, 1 black) as shown in the image to the right.

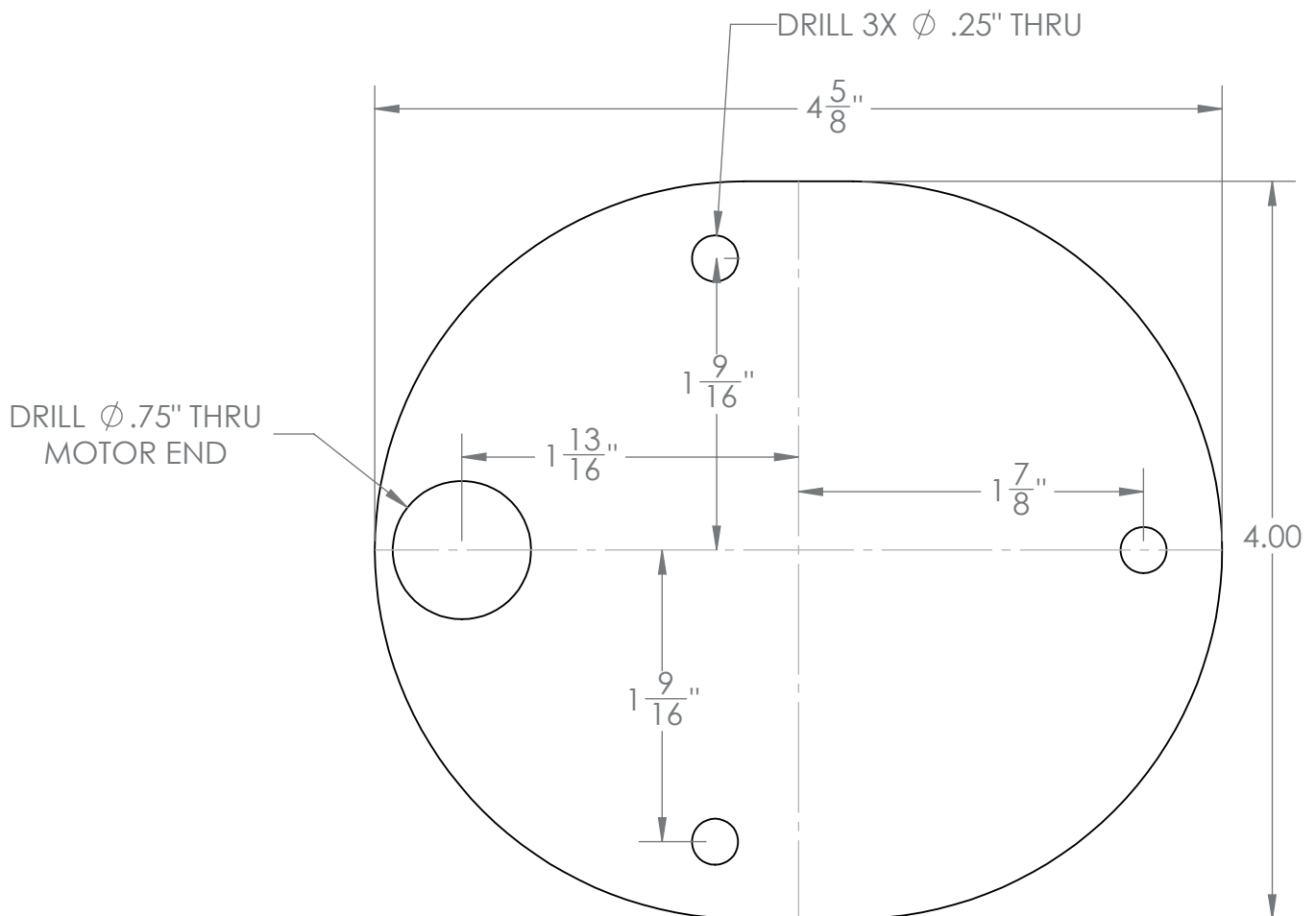
Using the crimpers attach wire to the male pins.

Insert the pins into the connector housing provided, Red wire goes into pin one hole on the connector and black into pin 2 on the connector. Verify the pins locked into the plastic shell.

From the pin end insert the green lock block.



GS-860/GS-960 Drill Template



Please print at 100 percent for accurate sizing. Slight scaling may still occur. Therefore, before drilling, it is recommended that all template dimensions be measured for accuracy.

How to clean

Always use a mild, non-abrasive soap and lots of fresh water. Thoroughly wash the stainless steel with a soft towel or sponge utilizing lots of soap and water to remove all dried salt crystals and other contaminants. Rinse completely with direct water pressure.

Safe Cleaners

Mild dish washing liquid, specialty marine cleaners:
Sea Safe Boat Wash, Boat Wash Concentrate
and Super Suds.

Safe marine lubricants:
CRC Corrosion Inhibitor, Corrosion Block
and Get Some Extreme.

Harmful Cleaners

Bleach (Clorox, etc.) and mild abrasive cleaners:
Ajax, Comet, Soft Scrub, Rubbing Compounds, etc.

Strong cleaners:
409, Engine Degreasers, etc.

Acids of any type:
Such as Muriatic, naval jelly or aluminum acid.

Need Support?

We're here to help.

Contact Us

support@tacomarine.com

<https://tacomarine.com/technical-support>

3020 North Commerce Parkway Miramar, FL

33025

@tacomarine

@taco_marine



WARRANTY TERMS & CONDITIONS

1-year Limited Warranty: VHF, Masthead Anchor Light Electric Mounts

TACO Marine warrants to the original purchaser of TACO Marine VHF, Masthead Anchor Light Electric Mounts to be free from factory defects in materials and workmanship for a period of one year from the date of purchase. Should they be proven defective in material or workmanship within one year of original purchase, they will be repaired or replaced without charge, subject to the performance guarantees stated in this warranty. These products are intended for pleasure crafts, used for recreation. Exposure to harsh marine environments requires all products to be rinsed with fresh water after use and be regularly maintained. This warranty does not include the following: Damage by collision, faulty or incorrect VHF Antennas, damage of components due to corrosive cleaners or lubricants, damage as a result of a combination of rough seas and high speeds, and failure to wash off salt water. This warranty is void if product has been damaged by neglect, unreasonable use, improper service and failure to follow maintenance guidelines TACO Marine's liability and purchaser's exclusive remedy for damages shall not be greater than the purchase price of the actual product claimed to be defective and TACO shall not be liable for any indirect, incidental or consequential damages, including, but not limited to, present or prospective profits, reliance expenditures or commitments, reputation, goodwill or claims of third parties. During this warranty period, your TACO Marine product will either be repaired or replaced without charge to the original purchaser, when returned prepaid and insured with proof of purchase date. This warranty covers repair or replacement costs for product and freight* back to the original purchaser-consumer. *Return freight to be paid by purchaser-consumer if shipping outside of the continental United States. For prompt warranty service, call the TACO Marine Warranty Department to receive your Warranty Tracking/Authorization Number.

TACO Metals, Inc. Warranty Department: warranty@tacometals.com, 800-653-856

