

TACO Marine® Grand Slam Mounts

GS-300 & GS-300XL Mount

INSTALLATION INSTRUCTION GUIDE



WARNING:

This product can expose you to chemicals including Lead, which is known to the State of California to cause cancer, birth defects or other reproductive harm. For more information go to www.P65Warnings.ca.gov.



TACO[®]
MARINE

Kit Contents

1

Grand Slam 300 or 300XL

1

Drill template

1

Hardware Kit

Required*

*not included

- SAFETY GLASSES
- DRILL & SCREW GUN
- MASKING TAPE & PENCIL
- 5/16" DRILL BIT
- FOUR 5/16" X 18 BUTTON HEAD SCREWS (LENGTH= (THICKNESS OF TOP) + 7/8")
- FOUR 5/16 X 18 NUTS
- MARINE-GRADE SEALANT
- ALLEN WRENCH SET
- 1/2" WRENCH OR SOCKET

TACO®

Handy Tips

- Always use good quality stainless steel hardware when mounting the base.
- Please do not attempt to weld the base to anything.
- It is also important that your Canvas T-Top, Arch or Hardtop, be suitably constructed to provide a strong mounting surface area.

GS-300 / 300XL

Thank you for purchasing the TACO Marine Grand Slam 300 or 300XL Outrigger Mount! As a family-owned and operated business since 1959, we take pride in offering the highest-quality, innovative products with excellent customer service. We stand behind our products 100 percent. If you have any questions about this mount or installation, please contact us by visiting tacomarine.com/contactus.

INSTALLATION

CANVAS TOP

- It is very important that your mounting surface for the Grand Slam (i.e., T-top, Arch or Hardtop), be suitably constructed to provide a strong mounting area for your outrigger base. It is recommended to use TACO Marine's weld-on Grand Slam extrusions.
- These plates are pre-drilled and ready to install the Grand Slam. If you already have a plate, it should be at least 3/8" thick and 5" wide, with 3-4 welded seams to be used to accommodate the 6" length of the units' base from bow to stern.
- When installing the Grand Slam through canvas, simply cut an X over the 3-1/8" hole. Install and bolt down the Grand Slam, then trim off the excess canvas.

HARDTOP

When installing through a hardtop, verify the top is foam or core filled. It is recommended to use included spacers (small lengths of tubing cut to size) to fit inside where the mounting bolts pass through to ensure that when the bolts are tightened the top is not compressed

-
- Backing plates are available for extra strength and recommended when mounting through a hardtop (part # BP-150BSY-320-1).
 - When installing your Grand Slam, locate the center of the 3-1/8" hole at least 9-1/2" from the hardtop frame, vertical post, or any other object that might hinder the movement of the handle.
 - If the top has an arch to it, wedge plates can be ordered to keep the Grand Slams upright and straight (part # WP-150WHA-1).
 - The maximum thickness allowable for GS-300 mounting is 2" and for GS-300XL is 4-1/2".
 - Position the mount with the outrigger attached so that it will not interfere with other hardware on the top.

INSTALLATION

USING A SOLID PLATE

Always use high-quality, stainless-steel hardware when mounting the base. Do not attempt to weld the base to any surface.

1. Before drilling your bolt holes, cut out a 3-1/8" diameter center hole.
2. When you are finished drilling your 3-1/8" hole, set the base in the hole being careful not to scratch the anodized finish of the lower components. Use your outriggers to help align the base.
3. The supplied template is only a guide to help align base for true hole positioning. Make sure nothing is rubbing in the 3-1/8" hole. There should be a small gap all the way around.
4. When the Grand Slams are aligned, mark and drill out the bolt holes.
5. Bolts, washers and nuts are provided or if you purchase your own, always use good quality stainless steel hardware when mounting the base. Please do not attempt to weld the base to anything.
6. If using a backing plate, put a bead of marine sealant on the underside of the flat plate. This prevents water drips.
7. Securely bolt the base to the mounting surface. Lubricate threads with marine-grade oil or grease.
8. Place the outrigger in the arm and test.
9. There are 20 locking positions.
10. Turn the crank handle to full up and down outrigger position to ensure the outrigger does not interfere with other top mounted accessories.
11. The pull pin to lock the outriggers is spring loaded. Simply pull out the pull pin, rotate 1/4 turn and release. Place your outrigger into the arm and turn the pull pin to snap back into position. Then turn your outrigger until it clicks in the locked position with eyelets facing aft if you are mounting aluminum poles.

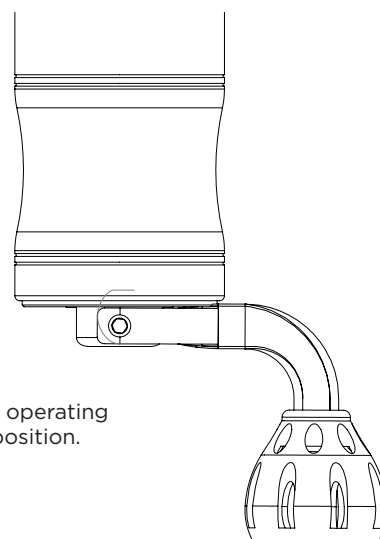
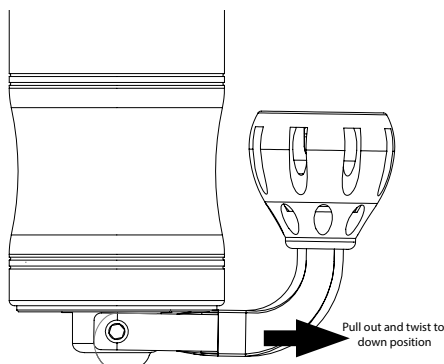
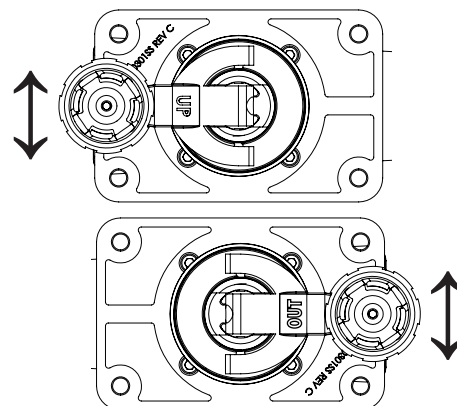
OPERATION

The GS-300 and 300XL are single arm operation for both lift of the outtrigger and rotation outboard. This is accomplished by flipping the crank handle through a 180° arc.

The crank arm is marked on each side with an "UP" or "OUT" indicator.

When the word "UP" is visible, the rotation of the crank will allow lifting of the outtrigger from horizontal to a 46° position.

When the word "OUT" is visible, the rotation of the crank will allow for rotation of the outtrigger. Flipping the handle back to "UP" locks the outtrigger rotation position.



To ease operation the crank handle on the GS-300/300XL has the ability to rotate into the operating position by pulling the spring loaded handle out and rotating it down into the operating position.

Maintenance

For optimal performance and to sustain product and beauty, after every use, rinse Grand Slam with fresh water and wipe down with clean microfiber towel.

Safe Cleaners

Mild dish washing liquid, specialty marine cleaners:

Sea Safe Boat Wash, Boat Wash Concentrate and Super Suds.

Safe marine lubricants:

CRC Corrosion Inhibitor, Corrosion Block and Get Some Extreme.

Harmful Cleaners

Bleach (Clorox, etc.) and mild abrasive cleaners:

Ajax, Comet, Soft Scrub, Rubbing Compounds, etc.

Strong cleaners:

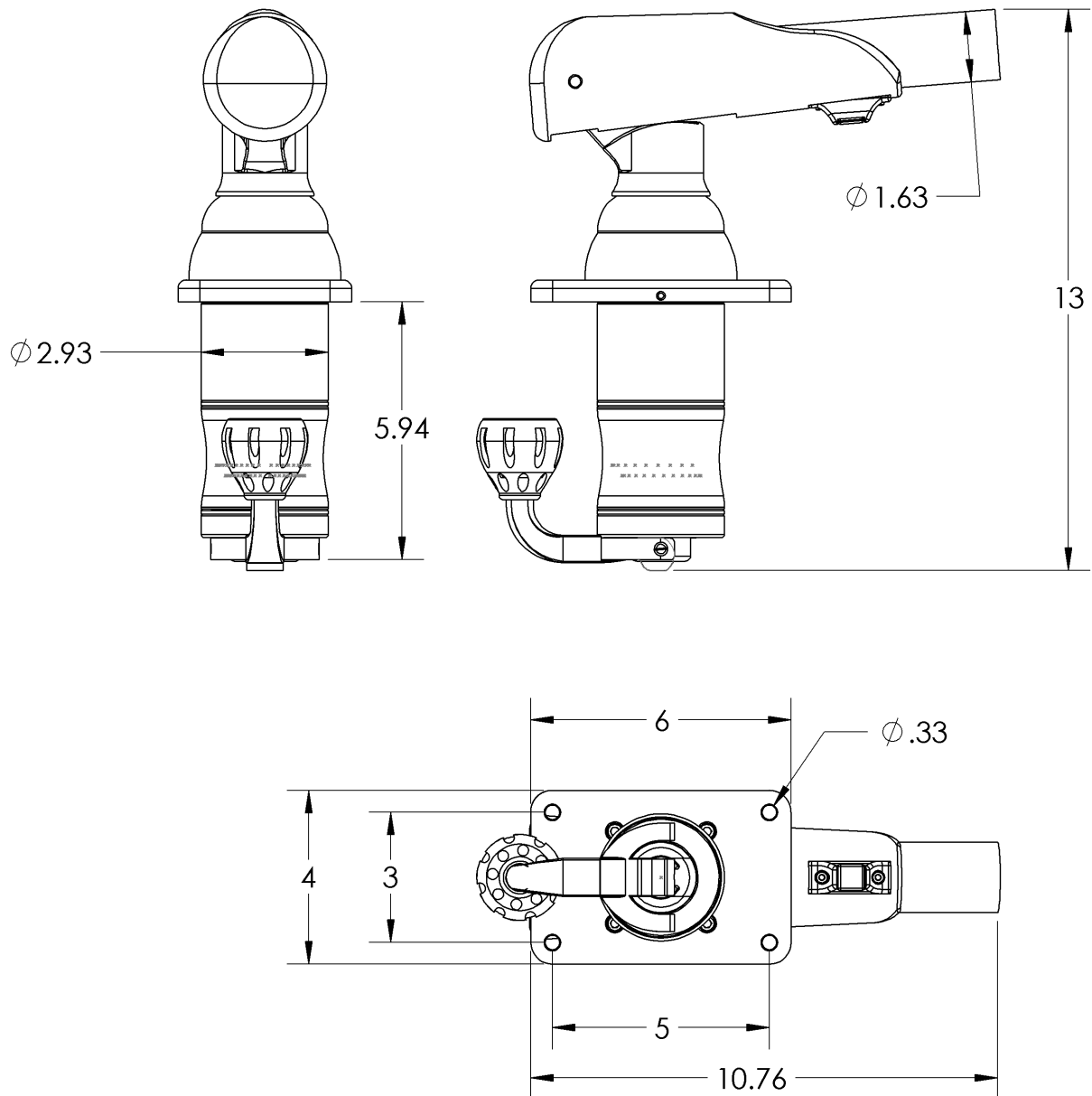
409, Engine Degreasers, etc.

Acids of any type:

Such as Muriatic, naval jelly or aluminum acid.

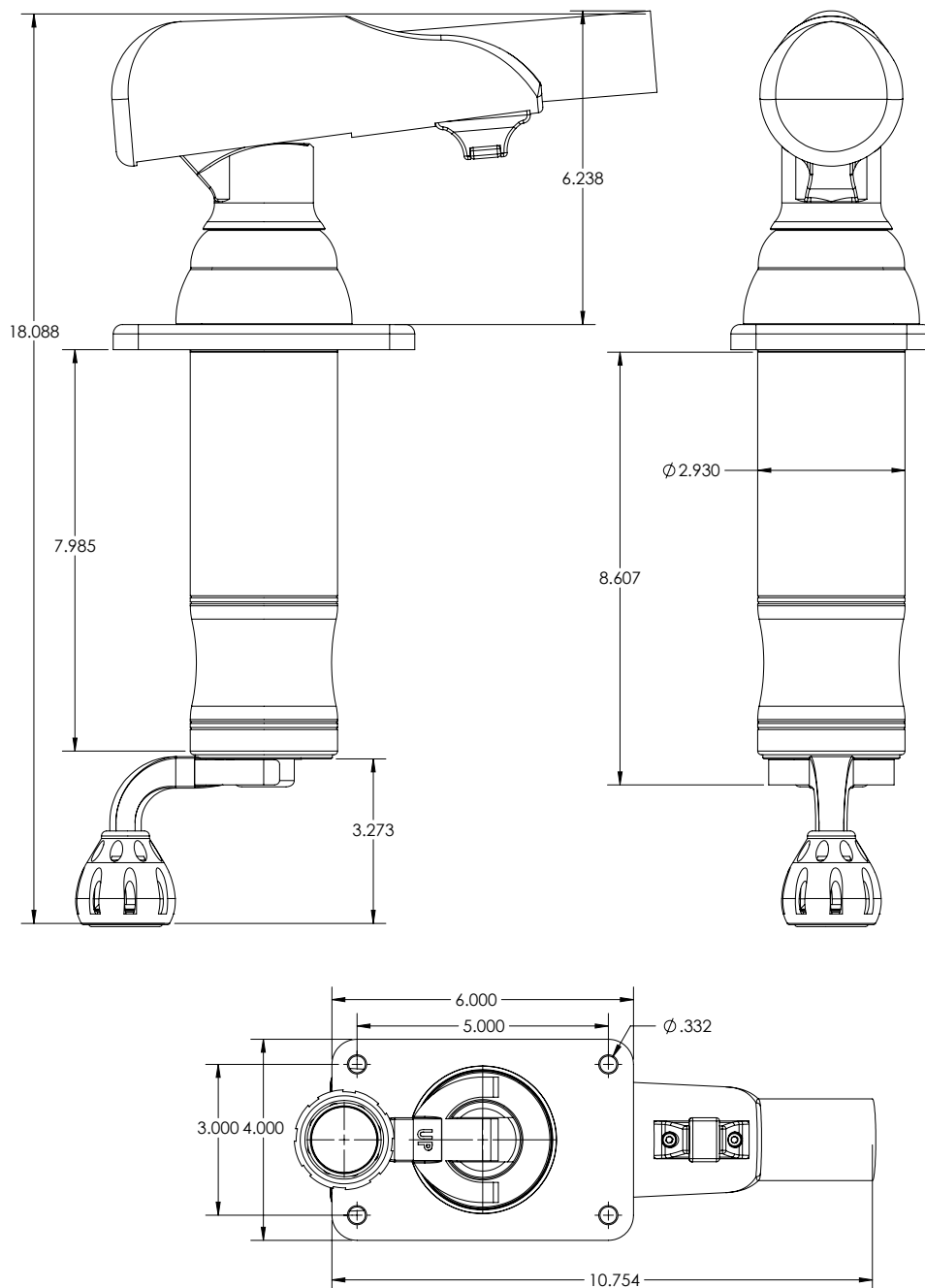
PRODUCT DIMENSIONS

GS-300

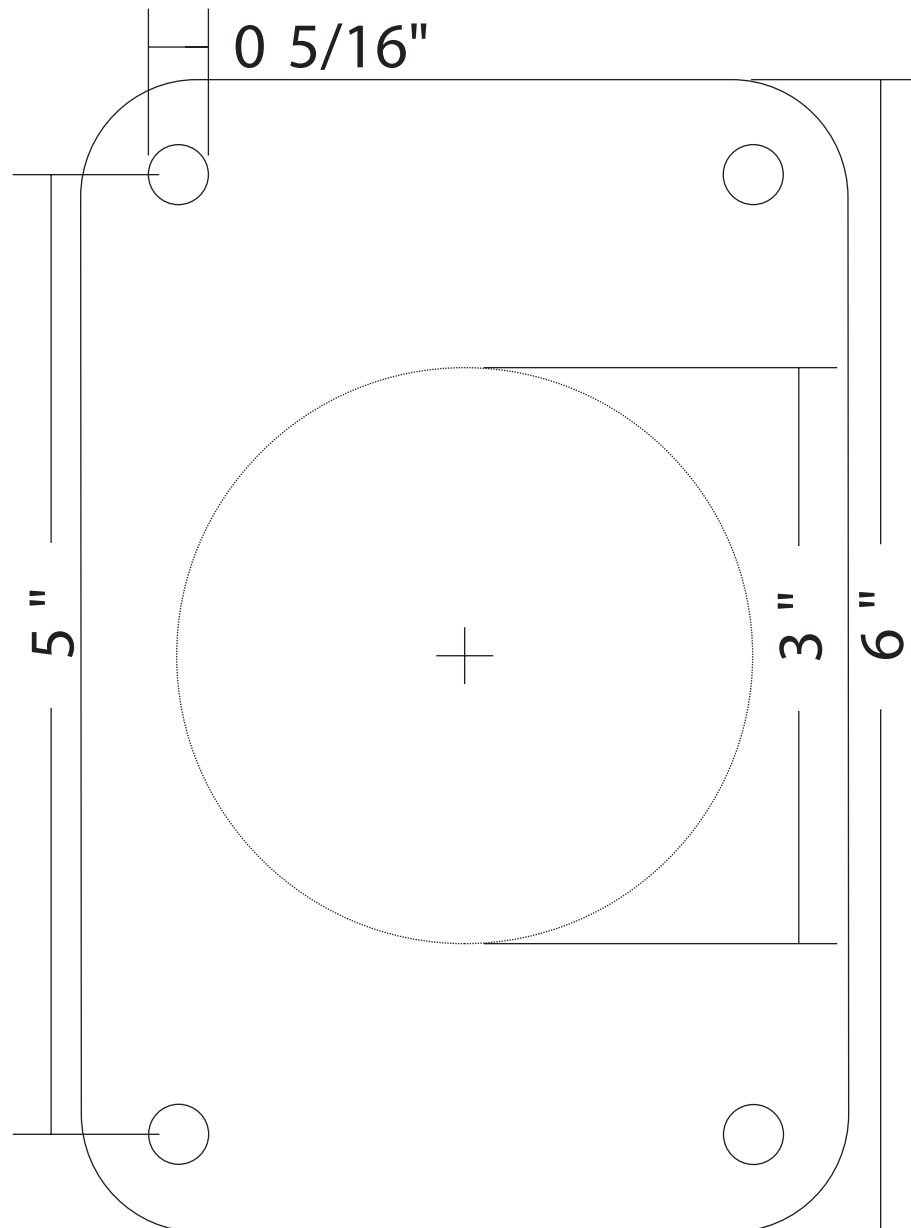


PRODUCT DIMENSIONS

GS-300XL



GS-300/GS-300XL Drill Template



Please print at 100 percent for accurate sizing. Slight scaling may still occur. Therefore, before drilling, it is recommended that all template dimensions be measured for accuracy.

Need Support?

We're here to help.

Contact Us



support@tacomarine.com



<https://tacomarine.com/technical-support>



3020 North Commerce Parkway
Miramar, FL. 33025



@tacomarine



@taco_marine

TACO Marine warrants to the original purchaser of its products that should any product be proven defective in material or workmanship within one, three or five year(s) of original purchase, they will be repaired or replaced without charge, subject to the performance guarantees stated in this warranty.

TACO Marine®



INSTRUCT-GS-300 V1