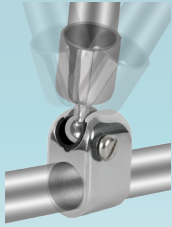




CANVAS TOP FITTINGS "STAINLESS STEEL BALL & SOCKET"



TACO Marine's polished marine-grade Stainless Steel Type-316L Canvas Top Fittings look great and will last a lifetime. The unique, patented Ball & Socket design offers easy, one-person installation. Delrin inserts eliminate rattle. TACO's full line of Ball & Socket top fittings are conveniently designed to fit standard tube sizes.

FEATURES & BENEFITS

- Delrin insert provides quiet, rattle-free and smooth operation
- Top Cap pivot design offers full rotation
- Deck hinges are offered in concave and flat mounts and will also fit windshield headers



F11-0171
F12-0182



F11-0177



F11-0180



F11-0182



F11-1001
F12-0300



F12-0181S



F12-0190
F12-0191



F13-0244



F13-0241



F13-0242



F13-0301



F13-0302



F13-1085



F13-1095

Patent number
US7461995B2
for F13-1085P,
F13-1085S,
F13-1095P &
F13-1095S

PART #	DESCRIPTION	TUBE SIZE	FASTENER
F11-0171A	Inside Eye End	7/8"	Crimped
F11-0177A	Top Cap	7/8"	Pop Rivet
F11-0177A-1*	Top Cap	7/8"	Set Screw
F11-0177S	Top Cap	7/8"	Set Screw
F11-0180P	90° Top Cap, Port (Side Mount)	7/8"	Pop Rivet
F11-0180S	90° Top Cap (Side Mount)	7/8"	Set Screw
F11-0180SB	90° Top Cap, Starboard (Side Mount)	7/8"	Pop Rivet
F11-0182	Top Cap	3/4"	Pop Rivet
F11-1001	Jaw Slide	7/8"	Pop Rivet
F11-1001AS	Jaw Slide	7/8"	Set Screw
F12-0181S	Top Cap	1"	Set Screw
F12-0182	Inside Eye End	1"	Crimped
F12-0190**	Square Inside Eye End	1-1/4"	Pop Rivet
F12-0191***	Square Inside Eye End	1-1/4"	Pop Rivet
F12-0300S	Jaw Slide	1"	Set Screw

DECK HINGES

F13-0241/244BN	Flat Deck Hinge w/Pin & Lanyard	7/8"	#8 Flat Head Screw
F13-0242/244BN	Concave Deck Hinge w/Pin & Lanyard	7/8"	#8 Flat Head Screw
F13-0301/244BN	Flat Deck Hinge w/Pin & Lanyard	7/8", 1" & 1-1/4"	#8 Flat Head Screw
F13-0301/244BN-1*	Flat Deck Hinge w/Pin & Lanyard	7/8", 1" & 1-1/4"	#8 Flat Head Screw
F13-0302/244BN	Concave Deck Hinge w/Pin & Lanyard	7/8", 1" & 1-1/4"	#8 Flat Head Screw
F13-1085P	Flat Deck Hinge w/D-Ring, Port	7/8", 1" & 1-1/4"	#8 Flat Head Screw
F13-1085S	Flat Deck Hinge w/D-Ring, Starboard	7/8", 1" & 1-1/4"	#8 Flat Head Screw
F13-1095P	Concave Deck Hinge w/D-Ring, Port	7/8", 1" & 1-1/4"	#8 Flat Head Screw
F13-1095S	Concave Deck Hinge w/D-Ring, Starboard	7/8", 1" & 1-1/4"	#8 Flat Head Screw

ACCESSORY

F13-0244BN	Stainless Steel Pin & Lanyard w/Plastic Knob	-	-
------------	--	---	---

*Retail Blister Pack (Each) ** (.065" Wall Tube) *** (.095" Wall Tube)