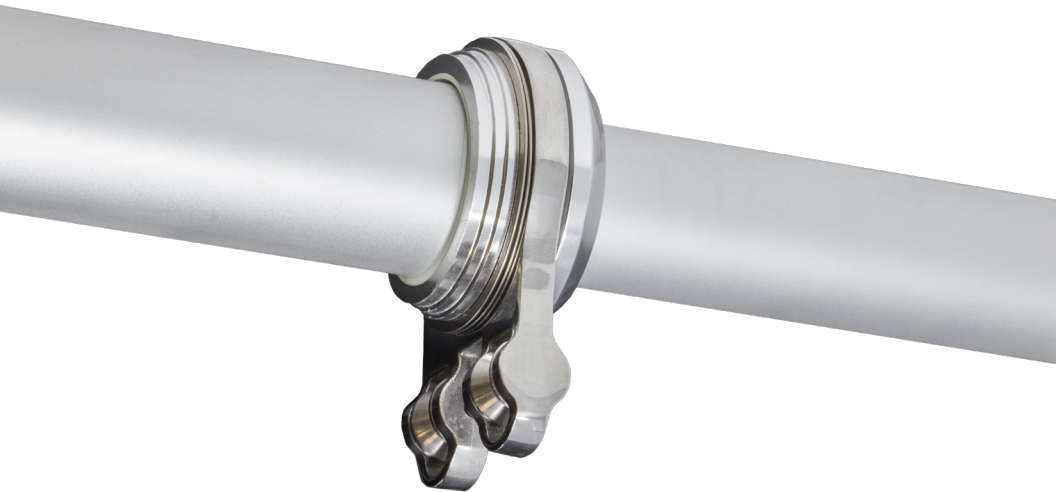




Installation & Care Instructions



**DELUXE ALUMINUM
TELE-OUTRIGGERS**

INTRODUCTION

Thank you for purchasing a quality TACO Marine product. As a family-owned and operated business since 1959, TACO Marine takes great pride in offering the highest quality products with excellent customer service. We stand behind our products 100 percent. Please visit our website, www.tacomarine.com, for more detailed information on a wide variety of Sport Fishing and Marine products. With proper use and maintenance, your new TACO Marine Deluxe Aluminum Tele-Outriggers will offer years of trouble-free performance.

WARNING

- High speed cruising in rough seas is not recommended.
- High speed cruising with the outriggers fully extended can cause damage to the outrigger sections and internal components of the aluminum outrigger construction.
- Retract your outriggers before operating under those conditions.
- Excessive release clip tension or faulty clips can cause unnecessary loads on outriggers and mounts. Adjust and check clips before each use.
- Do not dent any of the tubes.
- Do not tamper with the eyelets or swivel rings (OT-0318HD), as they are preset during assembly.
- Aluminum is a good conductor of electricity. Therefore, avoid use of the poles during lightning storms as a safety measure.

OPERATION TIPS

WARNING! WARNING!

Whenever possible, extend the outrigger poles while in the mounts or in freestanding position. Gently pull to the end of each section, keeping the swivel collars lined up in the down position. Once in position, rotate until the spring-loaded locking buttons engage.

OPERATION TIPS

- 1) The poles should not be kept on the boat all year long in the extended position, unless the boat is used very frequently. Therefore, long-term exposure to direct sunlight on a daily basis is not ideal for the Deluxe Aluminum Tele-Outrigger Poles.
- 2) High-speed cruising in rough seas is not recommended with the poles in the fully extended open position, as this can cause excessive stress on the poles and its internal components.
- 3) The Deluxe Aluminum Tele-Outrigger Poles should be retracted before operating the boat in long destination runs or under rough sea conditions.
- 4) Outrigger rigging/halyard lines should not have constant excessive tension with unnecessary loads of pressure on the outrigger poles and mounts. Adjust and check the tension on your outrigger lines and clips before each use for proper settings.
- 5) Avoid any heavy contact that can dent the poles, as this can create a weak point in the aluminum structure.
- 6) Do not tamper with the eyelets/swivel collar (OT-0318HD) mechanism. The collars are intended to keep each section of the poles in place and thread in by hand tightening.
- 7) Whenever possible, extend the poles while inside the outrigger mount or when freestanding. Gently extend each section to the end of each pole until the internal locking pin pops out. This serves as the indicator that the pole sections are properly locked into position.

MAINTENANCE

1) **Washing Your Aluminum Tele-Outrigger Poles:**

In the fully extended position, use freshwater and marine-grade boat soap that dissolves salt deposits. Spray or apply on the poles directly after each use, then rinse off with freshwater and allow drying before storing the poles. Salt solvent solutions, such as Salt Terminator, Salt Away and Salt Off, are also recommended, as these products leave a protective PTEF (Teflon) coating to help repel future salt and dirt grime from building.

2) **Lubricating Your Outrigger Poles:**

For extra protection, spray all exterior stainless and brass components and pop-out pins in each pole section with a quality marine-grade lubricant that does not wash off with rainwater. After applying, lightly wipe down with soft cloth. Lubricants, such as Corrosion Inhibitor by CRC, are highly recommended. (Silicone-based lubricants are not recommended.)

3) **Storing Your Tele-Outriggers:**

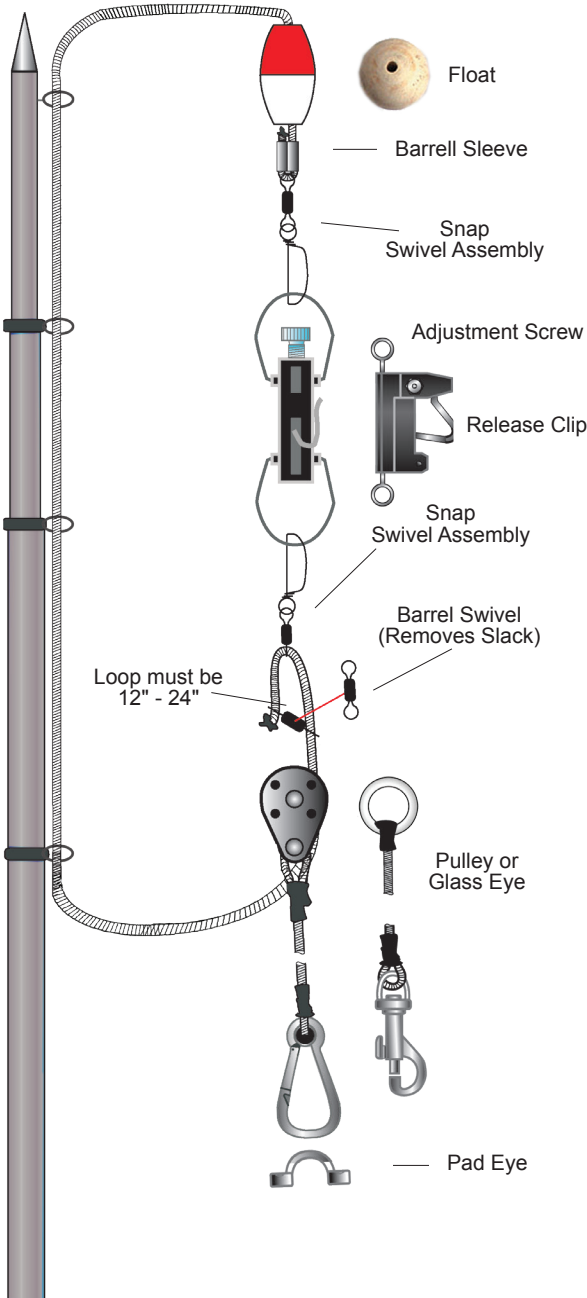
If the boat will not be used for an extended period of time, or put in storage for the winter season, it is recommended that the poles be removed, cleaned and stored in their retracted position.

4) **Winterizing:**

If the boat is kept outdoors in areas of freezing temperatures, it is recommended that the poles be retracted and removed from the boat while boat is not in use. If you are using TACO mounts and are going to remove the outrigger poles for the winter, it is recommended that the tubes on the mounts be left at a slightly downward position to prevent water from building inside the tubes and turning to ice. This can expand the diameter of the tubes and damage or crack them.

PREMIUM & STANDARD RIGGING KIT

Premium Standard



The pad eye that the bungee hooks onto is usually installed on the gunwale about 6" toward the stern, between the outrigger holder and the rod holder.

On the T-top, the pad eye is usually hooked onto the outer T-top ring so it can be easily reached.

COMPLEMENTARY TACO MARINE OUTRIGGER PRODUCTS

TACO Marine Grand Slam 380 Mount

- Fully adjustable from under the top
- For use on both soft and hardtops
- Fold-up crank handle for maximum clearance
- Lay down arm for bridges and trailering

TACO Marine Grand Slam 280 Mount

- 12 locking positions
- Rotator handle positioning installs to avoid obstruction
- Rotate outrigger position from under the top
- Lay down arm for bridges and trailering

TACO Marine Grand Slam 170 Mount

- Easy to install
- Pull pin for multiple fishing positions
- Operates above the top
- Lay down arm or bridges and trailering

TACO Marine Outrigger Line Caddy

- Clamp to Tele-Outriggers
- Eliminates rigging from tangles when retracted

TACO[®]
MARINE

For a complete selection of TACO Marine products or to find a Dealer in your area, please visit

tacomarine.com

Customer Service 800.653.8568 ©2018 TACO Metals, Inc.