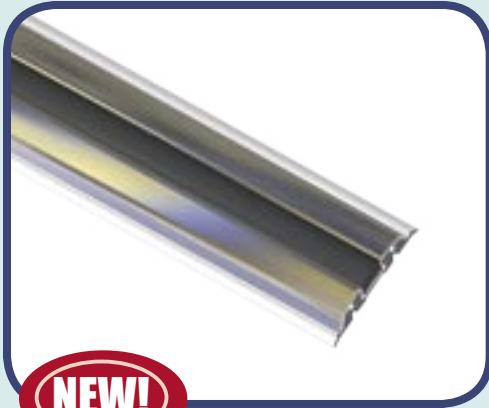




# RUB RAIL

## 2007 Feature Product



**NEW!**

### S11-1950 Euro-Style Rub Rail

TACO introduces a new rub rail that offers the elegance of stainless steel. A European-style, marine grade 316 stainless steel rub rail with polished mirror finish is a stylish new rub rail designed for larger boats & yachts.

Unlike traditional rub rails used on American boats, this new stainless steel rub rail is predominantly stainless with only a small visible black insert. A rigid vinyl track, installed behind the stainless steel rub rail absorbs impact and further strengthens this durable profile. A flexible black insert accents the rub rail and conceals fasteners for a clean look.



3-Part Design

### Features:

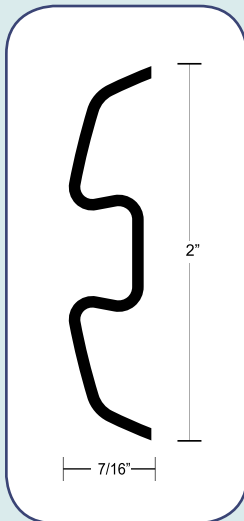
- Large stainless steel primary rub rail
- Flexible black insert
- Rigid vinyl track

### Benefits:

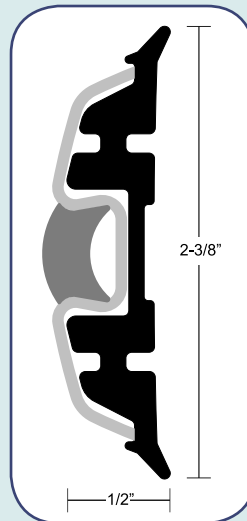
- Prominent stainless for unique elegant appearance
- Marine grade 316 stainless for ultimate in toughness and corrosion-resistance
- Thin, black insert conceals fasteners and provides trim accent
- Rigid vinyl track absorbs impact and prevents stainless steel from denting

Bulk	Description	Color	Length	Height	Width	Gauge	Screws
S11-1950P16*	Stainless rub rail	-	16'	2"	7/16"	.060"	#8
V25-9815WHA20D*	White, rigid vinyl track	WHA	20'	2-3/8"	1/2"	-	#8
V12-9814BKA250	Black flexible insert	BKA	250'	1/2"	3/8"	-	-

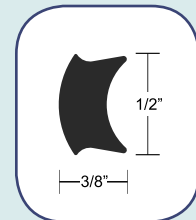
\*Drilled and countersunk on 6" centers



S11-1950P16  
Stainless Steel



V25-9815  
Rigid Vinyl



V12-9814  
Flexible Insert